

LOCATION & ACCOMMODATION

HOTEL WEITZER (Conference room 'Styria')

Grieskai 12 - 16, 8020 Graz; <https://www.hotelweitzer.com>

Accommodation

It is reserved a limited number of rooms at special rates for course participants at Hotel Weitzer. A code for application will be provided along with confirmation of registration.

COURSE FEES

Part I (Tumour Pathology) June 09 – 11, 2022 € 600,00

Part II (Non-tumour Pathology) June 13 – 15, 2022 € 600,00

Whole course (Part I & II) € 950,00

Course fees include daily lunch buffets and coffee breaks (except on course free Sunday), free WLAN, online course material, printed course manuals for booked course part(s), as well as the course certificate.

An additional **Social Program**, according to the Covid-19 regulations, is planned. Potential participants will be informed separately in due time.

CONTACT / REGISTRATION & PAYMENT

Course office: Ms Edith Kleinförchner
Diagnostic & Research Institute of Pathology –
Medical University of Graz
Neue Stiftingtalstraße 6, 8010 Graz, Austria
E-mail: edith.kleinförchner@medunigraz.at

Course website:

<https://pathologie.medunigraz.at/postgraduate-course-lung-pleural-diseases-2022>

Limited seating! Early registration is recommended.

Seating at the program is on a first come, first served basis and will definitely be assigned, based on the date of payment of the course fee.

Invoices, however, including terms of payment will be issued from Mid-January 2022 at the earliest.

We encourage you to reserve a seat at no risk by sending an E-mail to the course office.

Changes reserved depending on further Covid-19 pandemic development.



Medical University of Graz

POSTGRADUATE COURSE



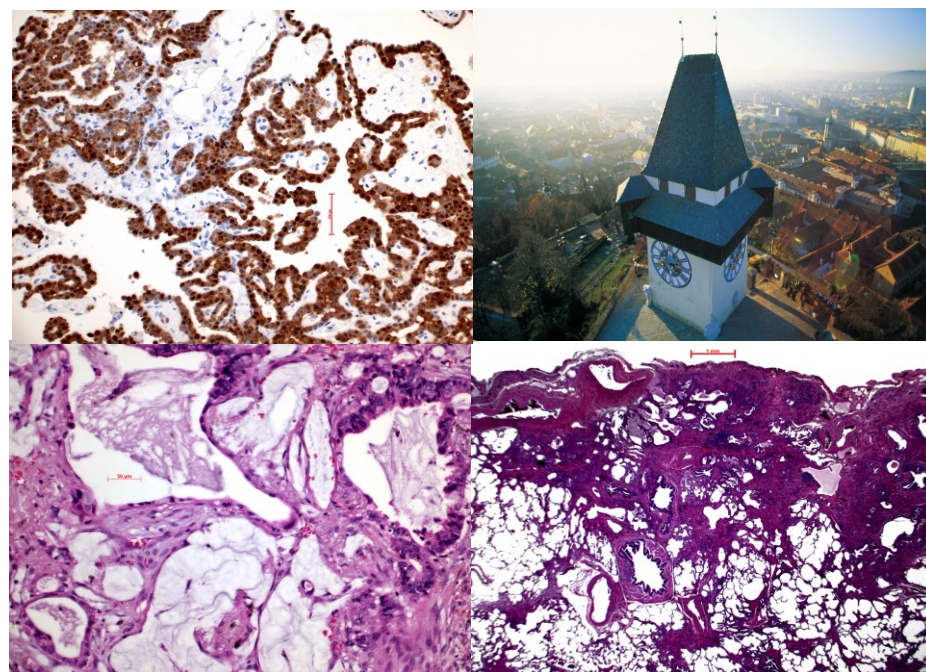
LUNG & PLEURAL DISEASES

WITH VIRTUAL MICROSCOPY

Part I (Tumour Pathology) June 09 – 11, 2022

Part II (Non-tumour Pathology) June 13 – 15, 2022

Graz, Austria



Course Director & Faculty

Helmut H. Popper, Graz, Austria

Guest Faculty

Junya Fukuoka, Osaka, Japan

Faculty

Luka Brcic, Graz, Austria

Ulrike Gruber - Moesenbacher, Feldkirch, Austria

COURSE OBJECTIVES

This two-part course is designed as live event and will run for six days. Covered topics are

- common and rare lung and pleural diseases
- biopsy
- cytology
- molecular diagnosis

Each part will consist of lectures, case teaching and discussions.

**WITH VIRTUAL
MICROSCOPY**

With confirmation of payment you will receive an email notification providing the link and password required to study approximately 300 cases. You may also opt to view the cases online during the course. Free WLAN internet access will be provided.

For those who prefer a direct and personal view of the glass slides some microscopes will be available at the course location.

This course is designed for trainees as well as for experienced colleagues. The course language is English.

Course parts can be booked separately.

PROGRAM

Part I (Tumour Pathology) June 09 – 11, 2022

This three-day course part will be devoted to common and rare lung and pleural tumours; tumours of childhood will also be covered.

Biopsy diagnosis will be done using an interactive internet based system for digital microscopy.

Part II (Non-tumour Pathology) June 13 – 15, 2022

These three days will cover interstitial lung diseases such as, bronchiolitis-ILD, idiopathic interstitial pneumonias, rare pulmonary and pleura non-tumorous diseases, granulomatous lung diseases, emphysema & COPD.

Also pediatric pulmonary pathology will be discussed.

Case presentations of interstitial lung diseases combined with biopsy interpretation will be included.

The impact of molecular pathology and immunohistochemistry in lung pathology will be discussed during the conference for each part.

Furthermore challenging cases, including infectious diseases, contributed by the participants will be discussed during the course.

COURSE DIRECTOR & FACULTY

Helmut H. Popper	Diagnostic & Research Institute of Pathology, Medical University Graz, Austria
Junya Fukuoka	Chair and director, Department of Clinical Pathology, Kameda Medical Center; Professor, Department of Pathology, Nagasaki University Graduate School of Biomedical Sciences, Osaka, Japan
Luka Brcic	Diagnostic & Research Institute of Pathology, Medical University Graz, Austria
Ulrike Gruber - Moesenbacher	Teaching Hospital, Feldkirch, Austria

ACCREDITATION / COURSE CERTIFICATE

European CME credits by the EACCME* (European Accreditation Council for Continuing Medical Education) as well as **DFP credit points by the Austrian Medical Chamber** have been requested. Accreditation process still in progress.

* Recognised by the American Medical Association as well as by the Royal College of Physicians and Surgeons of Canada

COURSE SCHEDULE

Part I will start on Thursday, June 9 at 8.00 am with on-site registration and will continue with scientific program at 8.30 am.

End of Part I is on Saturday, June 11 at 4.00 pm.

Part II will start on Monday, June 13 at 8.00 am and will end on Wednesday, June 15 at 4.00 pm.

On-site registration for those who take place in Part II only 10 minutes before the start of course part II.

OVERVIEW HOW TO GET TO GRAZ BY CAR, TRAIN, OR PLANE

<https://www.graztourismus.at/en/travel-and-transport>

SCHEDULED FLIGHTS TO GRAZ

<https://www.flughafen-graz.at>

MORE INFORMATION ABOUT GRAZ

<https://www.graztourismus.at>

MORE QUESTIONS?

Please contact the organizers:

[helmut.popper\[a\]medunigraz.at](mailto:helmut.popper[a]medunigraz.at) or [edith.kleinfurchner\[a\]medunigraz.at](mailto:edith.kleinfurchner[a]medunigraz.at)